

IMPORTANT! KEEP IT IN A SAFE PLACE FOR FUTURE REFERENCE!

**INSTRUCTION MANUAL FOR
MUSICAL BABY WALKY
„HAPPY ANIMALS”**



This product is produced in conformity with the requirements of Toy Safety Directive 2009/48/EC of the European Parliament and the Council, the Regulation on Essential Requirements and Conformity Assessment of Toys, the Regulation on Conformity Marking and the European standards applicable to this product.

**PLEASE READ THIS INSTRUCTION MANUAL
CAREFULLY BEFORE USING THIS TOY AND
KEEP IT IN A SAFE PLACE FOR FUTURE REFERENCE.**

IMPORTANT! MAIN WARNINGS!

- **CAUTION!** TO BE USED WITH A COMPANION AND ONLY UNDER ADULT SUPERVISION DUE TO RISK OF FALLING!
- **CAUTION!** THIS PRODUCT IS INTENDED FOR CHILDREN AGED 6 + MONTHS!
- **CAUTION!** CHILDREN WHO CANNOT WALK ALONE SHOULD NOT USE THE BABY WALKY!
- **CAUTION!** REGULARLY CHECK ALL THE PARTS OF THE PRODUCT! DO NOT USE THE TOY IN CASE YOU FIND ANY DAMAGED, MISSED OR WORN OUT PARTS. ALL JOINTS MUST BE IN GOOD WORKING ORDER. NO CRACKS ON THE CONSTRUCTION.
- **CAUTION!** USE THE TOY AT HOME ONLY ON FLAT, HORIZONTAL AND SAFE SURFACES, AWAY FROM STAIRS OR OBSTACLES, HEAT SOURCES AND POOLS OF WATER!
- **CAUTION!** USE THE TOY ONLY AT ITS PURPOSE!
- **CAUTION!** KEEP AWAY FROM FIRE!
- Unpacking and assemble of the TOY to be done **ONLY** by an adult!
- **DO NOT** attach to the TOY additional ties and accessories to avoid the risk of choking!
- When storing and transporting **DO NOT** place objects or heavy objects on the TOY to avoid damaging of the construction.
- **DO NOT** move the toy by pulling it with another transport means!
- **DO NOT** make changes or modifications to the TOY's construction! If necessary, contact your dealer or an authorized service for consultation and repair.
- **DO NOT** use spare parts and other components not supplied by the manufacturer! The manufacturer assumes no liability for the safety if spare parts other than those originally for the type approved or recommended are used.
- All packages must be kept away from children during unpacking and after that, to avoid risk of strangulation.

IMPORTANT! WARNINGS AND INSTRUCTIONS FOR USING BATTERIES

- Always secure the battery compartment with the cover after inserting the batteries.
- Do not allow children to access batteries and play with them!
- Only use batteries of the specified type and voltage.
- Do not use batteries of different type.
- Do not mix new ones with batteries already used.
- Keep the correct polarity.
- Remove damaged and exhausted batteries.
- Do not charge non-rechargeable batteries.
- Remove the batteries when you will not use the toy for long period.
- Do not dispose of batteries in open fire. Batteries should not be disassembled.



CAUTION! Waste from depleted or unusable batteries must be disposed of separately. It is forbidden to throw them out in containers for household waste. Dispose of the batteries only at the specified places.

MAIN FEATURES OF THE PRODUCT

MUSICAL BABY WALKY stimulates and supports the development of senses, coordination of movements and physical skills, recognition of colors, forms, sounds and melodies. The child can play with the toy sitting on the floor or standing, while listening to fun music can learn to recognize different shapes and colors.

- The TOY is intended for children aged 6+ months.
- Children who can not walk alone should not use the product.
- Plays melodies, sounds and lights.
- You can detach the toy “Car” and use it as a separate toy.
- Required batteries: 2 pcs, type AAA/1,5V (not included)

INSTRUCTIONS FOR ASSEMBLY AND SAFE USE

CAUTION! FOLLOW THOROUGHLY THE RECOMMENDATIONS AND CONSEQUENCE FOR USE OF THE PRODUCT IN THIS INSTRUCTION MANUAL!

CAUTION! CHECK THE SECURITY OF FIXING AFTER PERFORMING ANY OPERATION!

1 – ASSEMBLY OF THE SUPPPORT LEGS

Mount each support leg to the toy, as shown on the figure.

2 – ASSEMBLY OF THE HANDLE

Insert the handle in the openings of the toy panel and press, until you hear “click” sound and the handle get fixed.

3 – ASSEMBLY OF THE SIDE MIRRORS AND THE TOY “CAR”

Insert the side mirror in the corresponding openings with slight pressure, until you hear “click” sound and they get fixed.

Place the toy “Car” in the corresponding hole in the front part of the panel.

4 – FIXING THE TOYS WITH DIFFERENT SHAPES

Thread one end of the rope through the small hole of the panel and make a knot.

Thread the other end of the rope through the small hole of the panel and make a knot.

IMPORTANT! The shape of the opening from the panel in which the toy will be placed and the shape of the toy itself must be the same.

5 – STICKERS

Paste the stickers on the corresponding toys.

6 – ADJUSTMENT OF THE MOVEMENT SPEED/ PLACE WATER BOTTLE

A. Adjust the speed of the toy according to the age of your child. Turn the screw clockwise for slower movement and counterclockwise for faster movement (See figure).

B. You can attach a water bottle to the back of the panel to add weight and stability to the toy.

7 – FUNCTIONS

- *Push toy*
- *Musical toy “CAR”* – can be detached and used as a separate toy.

Insert 2 pcs. batteries type AAA/1,5 V (not included in the set).

The battery compartment is located on the back of toy “Car”. Pull out the toy “Car”. Unscrew the screw on the battery compartment cover. Remove the cover and insert 2 pcs. batteries type AAA/1,5V. Place back the battery compartment cover and screw it.

IMPORTANT! Keep the correct polarity in the battery compartment!

Buttons on toy “Car”:

A0: When the button is pressed 7 sound effects are played. Press the button to hear the next sound.

A1: When the button is pressed 5 melodies are played. Press the button, to stop the melody. Press again the button for next melody.

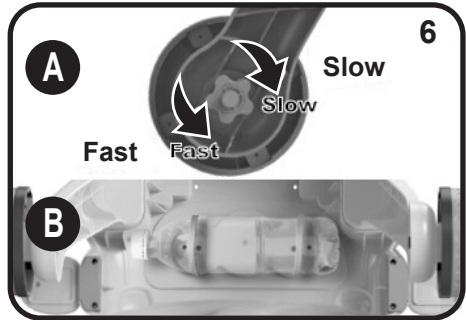
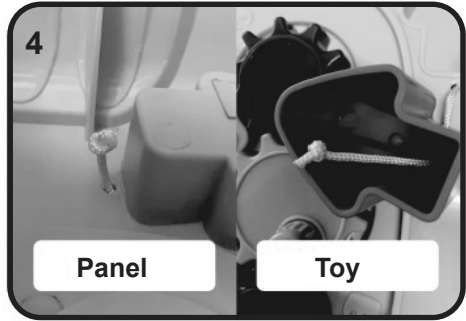
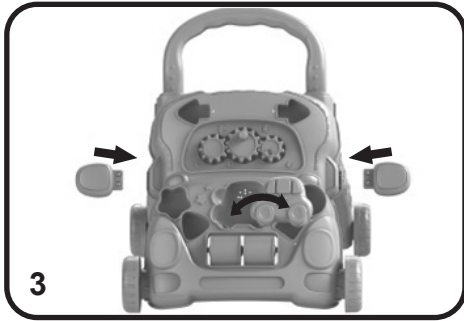
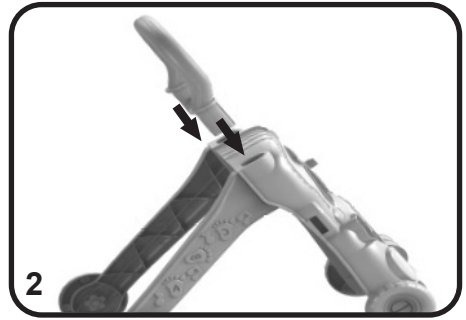
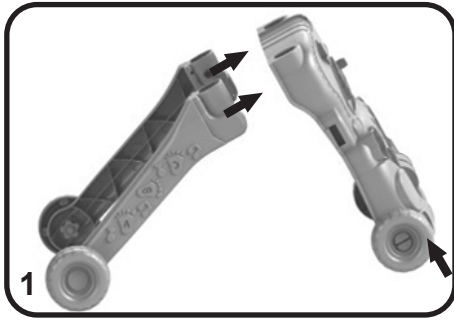
Note: While a melody is playing, you can press the A0&A2 button at the same time to play a sound effect.

A2: When the button is pressed, 7 car sound effects are played. Press the button to hear the next sound effect.

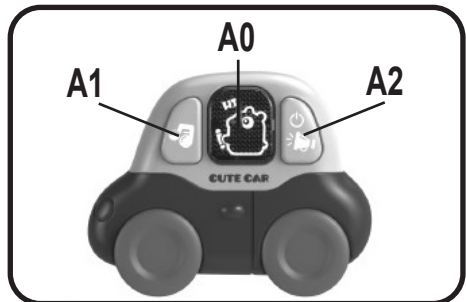
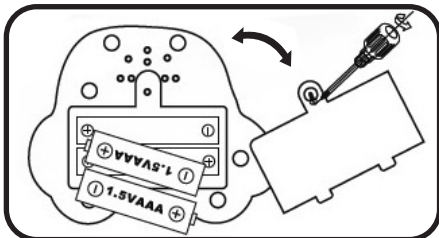
Note: Press and hold button A2 to turn off the toy.

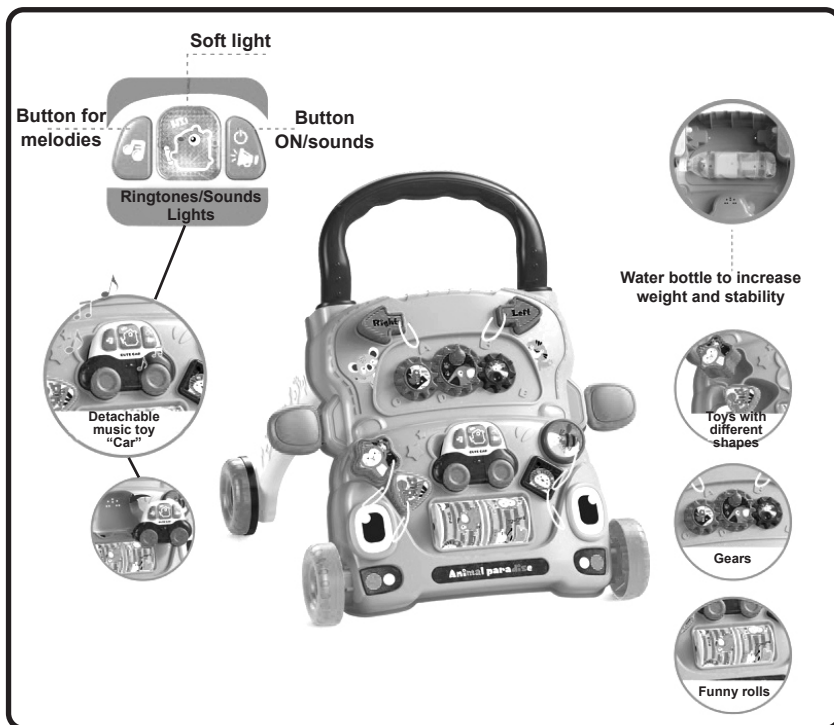
The lights flicker along with the music.

- *Gears*
- *Funny spinning rolls.*
- *Toys with different shapes*



Batteries: 2 pcs. type
AAA/1,5 V (not included)





CARE AND MAINTENANCE

- Periodically check the good working order of the separate parts.
- Do not wash or immerse the TOY with water. Use a soft damp towel and a neutral detergent.
- Do not use aggressive detergents containing abrasive particles, bleach or spirit.
- Regularly oil moving parts.
- Do not use on sandy terrains.
- Do not store the TOY in spaces with hot air or in proximity to warmth to prevent its deforming.
- Store the TOY in a clean and dry space. Do not let it under direct environmental influence – sun, rain, moisture or harsh temperature fluctuations!
- After each cleaning leave the TOY to fully dry before storing or using it. Rust and mildew may appear if you store the product damp.
- The musical toy „CAR“ consists of small electronic components. Avoid a blow!
- In case of problems related to the normal use of the product, turn to authorized service for repair or advice.

Materials used: plastic, metal

MIKFAN0241BL/ 6003
MIKFAN0242PI/ 6004

Producer: Made in China

Importer: CHIPOLINO LTD., 1 Goliamokonarsko Shosse Str,
Plovdiv, BULGAIRA, tel.: +359 32 600 889

www.chipolino.com