

**IMPORTANT! KEEP IT IN A SAFE PLACE
FOR FUTURE REFERENCE!**

**INSTRUCTION MANUAL FOR
MUSICAL BABY WALKY
„FUNNY GAME”**



This product is produced in conformity with the requirements of Toy Safety Directive 2009/48/EC of the European Parliament and the Council, the Regulation on Essential Requirements and Conformity Assessment of Toys, the Regulation on Conformity Marking and the European standards applicable to this product.

**TO ENSURE THE SAFE USE OF THIS PRODUCT,
FOLLOW THE WARNINGS, INSTRUCTIONS
AND RECOMMENDATIONS IN THIS MANUAL:**

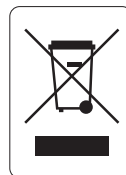
IMPORTANT! MAIN WARNINGS!

- **CAUTION!** TO BE USED WITH A COMPANION AND ONLY UNDER ADULT SUPERVISION DUE TO RISK OF FALLING!
- **CAUTION!** THIS PRODUCT IS INTENDED FOR CHILDREN AGED 10 + MONTHS!
- **CAUTION!** CHILDREN WHO CANNOT WALK ALONE SHOULD NOT USE THE BABY WALKY!
- **CAUTION!** REGULARLY CHECK ALL THE PARTS OF THE PRODUCT! DO NOT USE THE TOY IN CASE YOU FIND ANY DAMAGED, MISSED OR WORN OUT PARTS. ALL JOINTS MUST BE IN GOOD WORKING ORDER. NO CRACKS ON THE CONSTRUCTION.
- **CAUTION!** USE THE TOY AT HOME ONLY ON FLAT, HORIZONTAL AND SAFE SURFACES, AWAY FROM STAIRS OR OBSTACLES, HEAT SOURCES AND POOLS OF WATER!
- **CAUTION!** USE THE TOY ONLY AT ITS PURPOSE!
- **CAUTION!** KEEP AWAY FROM FIRE!
- Unpacking and assemble of the TOY to be done **ONLY** by an adult!
- **DO NOT** attach to the TOY additional ties and accessories to avoid the risk of choking!
- When storing and transporting **DO NOT** place objects or heavy objects on the TOY to avoid damaging of the construction.
- **DO NOT** move the toy by pulling it with another transport means!
- **DO NOT** make changes or modifications to the TOY's construction! If necessary, contact your dealer or an authorized service for consultation and repair.
- **DO NOT** use spare parts and other components not supplied by the manufacturer! The manufacturer assumes no liability for the safety if spare parts other than those originally for the type approved or recommended are used.
- All packages must be kept away from children during unpacking and after that, to avoid risk of strangulation.

IMPORTANT! WARNINGS AND INSTRUCTIONS FOR USING BATTERIES

- Always secure the battery compartment with the cover after inserting the batteries.
- Do not allow children to access batteries and play with them!
- Only use batteries of the specified type and voltage.
- Do not use batteries of different type.
- Do not mix new ones with batteries already used.
- Keep the correct polarity.
- Remove damaged and exhausted batteries.
- Do not charge non-rechargeable batteries.
- Remove the batteries when you will not use the toy for long period.
- Do not dispose of batteries in open fire. Batteries should not be disassembled.

CAUTION! Waste from depleted or unusable batteries must be disposed of separately. It is forbidden to throw them out in containers for household waste. Dispose of the batteries only at the specified places.



MAIN FEATURES OF THE PRODUCT

MUSICAL BABY WALKY stimulates and supports the development of senses, coordination of movements and physical skills, recognition of colors, forms, sounds and melodies. The child can play with the toy sitting on the floor or standing, while listening to fun music can learn to recognize different shapes and colors.

- The TOY is intended for children aged 10+ months.
- Children who can not walk alone should not use the product .
- Plays melodies, sounds and lights.
- You can detach the toys „Piano”, „Phone”, „Drawing board” and use them as separate toys with different shape.
- Required batteries: 3 pcs, type AAA/1,5V (not included in the set).

INSTRUCTIONS FOR ASSEMBLY AND SAFE USE

CAUTION! FOLLOW THOROUGHLY THE RECOMMENDATIONS AND CONSEQUENCE FOR USE OF THE PRODUCT IN THIS INSTRUCTION MANUAL!

CAUTION! CHECK THE SECURITY OF FIXING AFTER PERFORMING ANY OPERATION!

1 and 2 – WATER TANK

Fill the tank with water (fig.1). Place the tank towards the back of the toy and fix with two screws as shown in figure 2.

3 – BATTERIES

The battery compartment is located on the back of the toy “PIANO”. Pull out the toy “PIANO”. Unscrew the screw on the battery compartment cover. Remove the cap and insert 3 AAA/1.5V batteries. Place the battery compartment cover and tighten the screw.

IMPORTANT! Observe the designated polarity in the battery compartment!

Note: To turn on the functions of the “Piano” toy, set the slider to the “ON” position, and to turn it off - to “OFF” position.

4 – ASSEMBLY OF REAR AND FRONT WHEELS

Fix the wheels to the support legs with screws, as shown in the figure.

5 – ASSEMBLY OF THE SUPPORT LEGS

Attach the support legs to the toy.

6 – FIXING OF THE SUPPORT LEGS WITH SCREWS

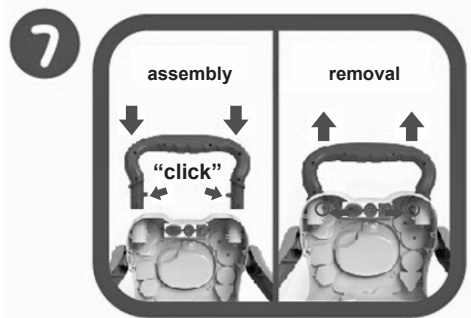
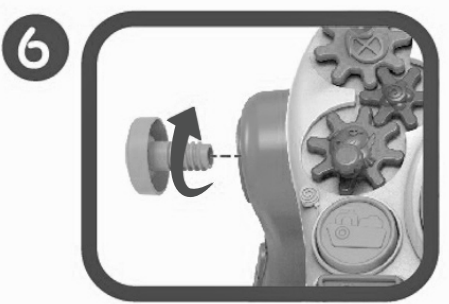
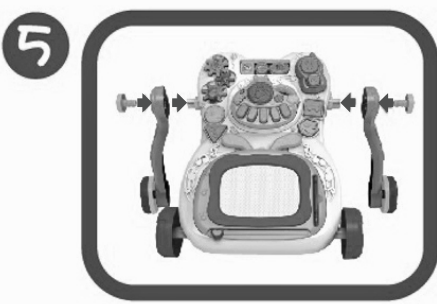
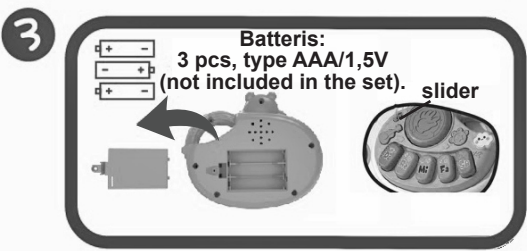
Screw the support legs both sides to fix

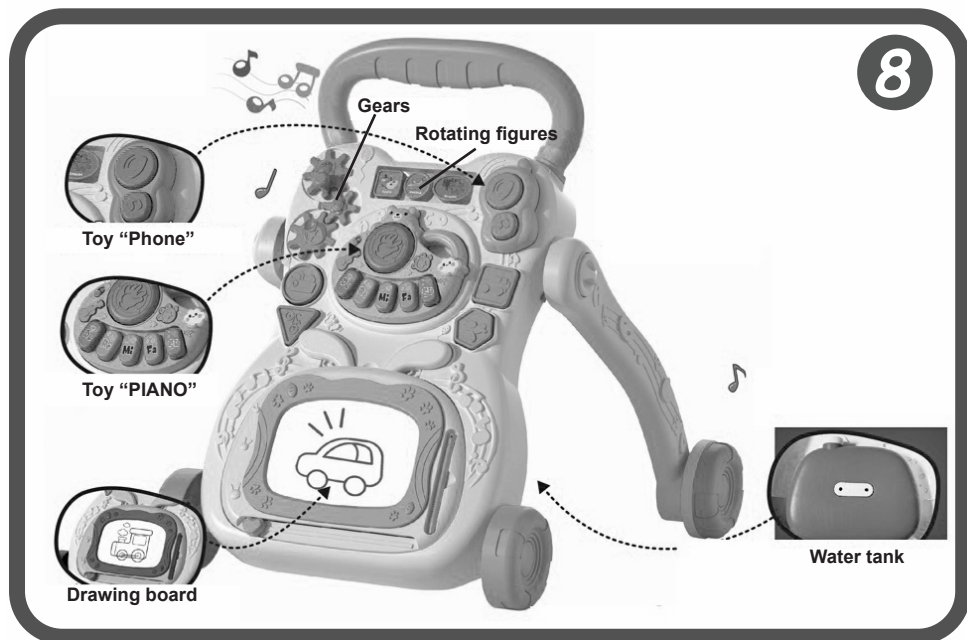
7 – ASSEMBLY AND REMOVAL OF THE HANDLE

Press the buttons and insert the handle in the corresponding openings, until you hear a “click” sound and the buttons show through the openings. To remove the handle, press the buttons and pull the handle up.

8 - FUNCTIONS

- **Push toy**
- **Toy „PIANO“ – can be detached and used as separate toy.**
- **Toy „PHONE“ – can be detached and used as separate toy.**
- **Toy „DRAWING BOARD“ – can be detached and used as separate toy.**
- **Gears**
- **Multifunctional buttons**
- **Toys with different shapes**





CARE AND MAINTENANCE

- Periodically check the good working order of the separate parts.
- Do not wash or immerse the TOY with water. Use a soft damp towel and a neutral detergent.
- Do not use aggressive detergents containing abrasive particles, bleach or spirit.
- Regularly oil moving parts.
- Do not use on sandy terrains.
- Do not store the TOY in spaces with hot air or in proximity to warmth to prevent its deforming.
- Store the TOY in a clean and dry space. Do not let it under direct environmental influence – sun, rain, moisture or harsh temperature fluctuations!
- After each cleaning leave the TOY to fully dry before storing or using it. Rust and mildew may appear if you store the product damp.
- The musical toy „PIANO” consists of small electronic components. Avoid a blow!
- In case of problems related to the normal use of the product, turn to authorized service for repair or advice.

Materials used: plastic, metal

MIKFGM241PI/ 368-16A
 MIKFGM242GR/ 368-16B
 MIKFGM243BL/ 368-16C

Producer: Made in China
Importer: CHIPOLINO LTD., 1 Goliamokonarsko Shosse Str,
Plovdiv, BULGAIIRA, tel.: +359 32 600 889

www.chipolino.com